

HOME & DESIGN

A TIMES OF INDIA PUBLICATION

TRENDS

VOLUME 10 NO 5



CONGRATULATIONS!

To all our recipients of the TRENDS Excellence Awards
for Architecture & Design 2021

CONTENTS



ON THE COVER
Recipients of the TRENDS Excellence Awards
for Architecture & Design 2021

05 SPOTLIGHT

We give you a sneak-peek into interiors designer Gauri Khan's latest venture

06 D/CODE 2022: SOUTH EDITION

A glimpse of the show held in Bengaluru

14 TRENDS EXCELLENCE AWARDS FOR ARCHITECTURE & DESIGN

An introspective on the lineage of the country's most distinguished awards ceremony

15 JURY MEET

Snapshots from the selection process of identifying the winners of the 8th edition of the TRENDS Excellence Awards for Architecture & Design

16 GET TO KNOW THE JURORS

The jury panel comprised of Neesha Alwani, Rahul Kadri, Rooshad Shroff, Shruti Jalan and Zubin Master. We take a brief look at their professional journey...

27 BEST PRACTICE

rED Architects and AA Home

29 ARCHITECTURE

Residential Project – SHROFFLE6N and Apoorva Shroff for rED Architects
Commercial Project – Studio Lotus
Public/Institutional Project – De Earth
Sustainable Project – Zero Energy Design Lab
Best Concept For An Unbuilt Project – Studio Saransh and Architecture Discipline
Leisure Project – SJK Architects

37 INTERIOR DESIGN

Residential Interiors – AA Home
Public/Institutional Interiors - Archohm Consults Pvt Ltd and Urban Frame Pvt Ltd
Bar/Restaurant – AA Home
Workspace – Architecture Discipline
Retail Project – SJK Architects
Leisure Project - Edifice Consultants

44 PRODUCT DESIGN

Furniture Design – Desigm
Light Design – Rhea Mehta Design

46 VISUAL DESIGN

Architecture Photography – P S Design
Interiors Photography – Inclined Studio

48 SOUTH SPECIAL

FADD Studio
RGP Design Studio
Sheilyharoon Architects
Srijit Srinivas Architects
Studio Nirvana

53 RECOGNITION FOR CONTRIBUTION TO THE FIELDS OF INDIAN ARCHITECTURE AND DESIGN

Thomas Associates Architects and Mistry Architects

HOME & DESIGN TRENDS

High-end Indian and International Homes, Extraordinary Architects & Designers, Best in Product Designs, Celebrated Guest Columnists, Latest Commercial Spaces, New Properties and more. Your authoritative guide to architecture and design is now on the web.



FOLLOW US ON
 f Home & Design TRENDS
 @ trendsmagind
 TrendsMagIndia

E-MAGS AVAILABLE ON



CHIEF EXECUTIVE OFFICER
DEEPAK LAMBA

CHIEF BUSINESS OFFICER
SUNITA QUADROS

EDITOR IN CHIEF
RONITAA ITALIA

Managing Editor	Avril Noel D'Souza
Associate Editor	Neerja Kapadia
Assistant Editor	Vanita Arora
Content Producer	Avni Raut
Associate Art Director	Shalaka Shinde
Assistant Art Director and Stylist	Anushree Kumar
Department Coordinator	Shayli Korgaonkar
Vice President Marketing	Vidyut Patra
Senior Brand Manager	Chandni Chopra
Chief Financial Officer	Subramaniam S.
Head Human Resources	Meghna Puthawala
Corporate Strategy and Subscriptions Lead	Ritika Masand

BRAND SOLUTIONS

SALES HEAD
SHRUTISH MAHARAJ

WEST Mumbai Vice President - Brand Solutions Gautam Chopra - 9820181757 gautam.chopra@wmm.co.in	EAST Assistant Vice President Alka Kakar - 9830331780 alka.kakar@wmm.co.in
Pune Senior Manager - Brand Solutions Aditi Shrivastava - 9960163182 aditi.shrivastava@wmm.co.in	NORTH Senior Vice President Anjali Rathor anjali.rathor@wmm.co.in

SUBSCRIPTIONS

Asha Kulkarni, Manager Marketing
asha.kulkarni@wmm.co.in
Call: 18001210005 (All India toll free number)

Senior Manager, Subscription
Sakshi Kate - sakshi.kate@timesgroup.com

For subscription, visit: mags.timesgroup.com/home-trends.html

SMS: TRNSUB to 58888

Mail: subscriptions.wmm@wmm.co.in
Call: 18001210005 (All India toll free number)



Printed and published by Sunil Dad for and on behalf of Worldwide Media Pvt. Ltd. The Times of India Building, 4th floor, Dr. D. N. Road, Mumbai 400001 and printed at Rajhans Enterprise, No. 134, 4th Main Road, Industrial Town, Rajajinagar, Bangalore 560044, India.

The publisher makes every effort to ensure that the magazine's contents are correct. However, we accept no responsibility for any errors or omissions. Unsolicited material, including photographs and transparencies, is submitted entirely at the owner's risk and the publisher accepts no responsibility for its loss or damage.

All material published in Home & Design Trends is protected by copyright and unauthorized reproduction in part or full is forbidden.

CIN: U22120MH2003PTC142239

EDITOR'S NOTE



The TRENDS Excellence Awards have always been close to my heart. Why, you want to know? Because it's one of the truest, sincerest projects I've ever been part of. In every sense. Every year.

To start with, as a rule, we don't really advertise the awards much other than what we do in our own magazine and website. Considering that, the number of entries we get has only been growing each year. The joy in this also lies in the quality of entries received – this makes my heart swell because it's also an indicator of the general health of our industry and how the bar is being raised progressively with each passing year. Our expectations only get higher, and I have to say, it's been over seven years and I haven't been disappointed.

For every edition, the jury convenes for an entire day's worth (at times even two!) of deliberation. The entries are presented to them anonymously. The scoring is tabulated independent of personal biases, and the entire process is enriching and enlightening, to say the least! I can proudly say that there's never a dull moment for any of us.

This year, the TRENDS Excellence Awards were executed and hosted after a two-year hiatus, thanks to the pandemic. The anticipation was palpable, and the awards that much more awaited. As a team, it connects us with the community and the industry we love so much. As a platform, it's our very *raison d'être*!

With this issue, we bring you a round up and the stars of the TRENDS Excellence Awards 2021-2022.

A handwritten signature in black ink, appearing to read 'Ronitaa' with a stylized flourish at the end.

Ronitaa R. Italia
Editor in Chief

ARTFUL ARTICULATIONS

We give you a sneak-peek into interiors designer Gauri Khan's latest venture

Text AVNI RAUT

Always open to learning and unafraid to explore newer avenues professionally, interiors designer, author and producer Gauri Khan recently made her foray into hosting with her show *Dream Homes by Mirchi*. In the recently concluded first season, she undertook the challenge to transform different spaces for six celebrities as she tackled varied briefs and tight timelines, navigating the entire process with complete finesse. We briefly encapsulate what transpired in this season...

Fashion designer Manish Malhotra's outdoor extension to his bedroom received a deft update through the amalgamation of soothing, fresh shades, fine décor elements and ample greenery, culminating in a warm, inviting haven for him to relax in. Acing director Kabir Khan's one-day challenge to revamp his office, Gauri spruced it up through smart interventions that were quick to execute and brought in a refreshed ambience while retaining an essence of what existed previously, including curating a visual narrative of his filmography through his movie posters and other mementos that adorned his office.

Director and choreographer Farah Khan's entertainment room was converted into a multifunctional family room. Bolder colours were done away with and lighter tones were introduced, not just for the base palette but also for the decor elements, with pops of yellow to create visual interest. This muted aesthetic, coupled with the spacious expanse of the room and ample natural light streaming inside, maximised the appearance of the space visually. Actor, dancer and television personality Malaika Arora sought Gauri's help to redo her son Arhaan Khan's bedroom. Integrating his preferences and focusing on curating a space with a neat appeal, she gave it a tasteful transformation while preserving the nostalgic elements.

For actress Jacqueline Fernandez's bedroom, she introduced elements in alignment with the existing base palette and the choice to integrate plush fabrics, pastel hues, artistic touches and plenty of plants, infused it with warmth and character that it lacked originally. Lastly, Gauri took on actress Katrina Kaif's spacious terrace, a blank canvas that she converted into a cosy yet breezy outdoor lounge of sorts, which now offers aesthetic backdrops perfect for some snazzy social media shots.



The first season of *Dream Homes* by Mirchi revolves around space makeovers and showcases how interiors designer Gauri Khan revamps the personal spaces of six celebrities.

D/code

A Times Group Initiative

SOUTH EDITION 2022

POWERED BY

hangrohe

An initiative by Home and Design Trends, D/code, India's first curated luxury lifestyle show, travelled to Bengaluru. We waited almost three years for Bengaluru to open its doors to us, and as expected, the Garden City was magical, welcoming and absolutely inspiring. D/code South Edition 2022 powered by hangrohe, the satellite version of our flagship IP, was curated by Shernavaz Bharucha. For two days, we transformed the halls of Chamara Vajra, Bengaluru, into an exciting design hub. From brands and indie labels to artists, architects, interior designers and homeowners, the industry came together to celebrate and support. Highlights included stimulating power talks, panel discussions, networking brunches and more.

Here's a glimpse.

ASSOCIATE PARTNERS

LUTRON

KOHLER

RISE

Valcucine

PAOLA ZENTI

Rimadesio

DIGITAL PARTNERS

YOUKRAFT.com
HOME & HARDWARE MEGASTORE

SOUND PARTNERS

AK
INTERNATIONAL
Audio Video Distribution

FOCAL
Powered by **naim**

PARTNERS

ZIPSCREEN

snitamoksh

TECTONA
GRANDIS
FURNITURE

JAIPUR RUGS

NBT
CURTAIN SYSTEMS

TULIO

Wooden Street
Furniture...bonded with love

SAMURAI HOME

PORTA FINESTRA
Elegance In Simplicity

SAINT-GOBAIN

MY HOME
BY SAINT-GOBAIN

VAYA

baaya
ARTFUL SPACES

P³ Architectural Solutions

esape
CREATIVITY

beruru
THE GARDEN RESERVE

VENZO
CURATED VENEERS

ro:sha

The Purple Turtles
Lighting.Living

MIMG
MAKE MY GARDEN

FREEDOM TREE

hundred hands

mformottle.

SANDILYA
THEUERKAUF

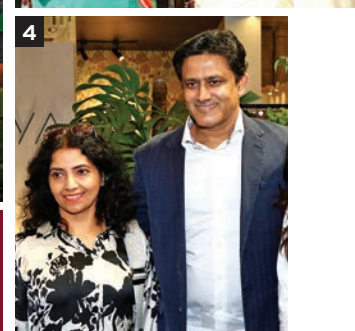
crimson
the art resource

mandala
POTTERY

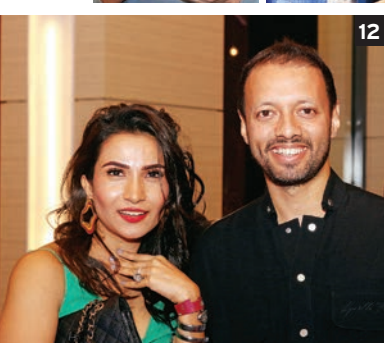
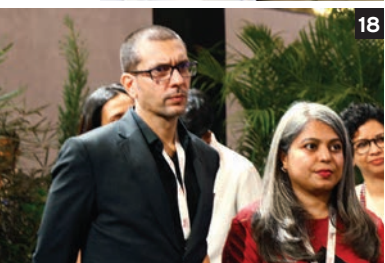
dheRa
stem.

dt
DEETEE HOME

WALLS



1. Editor in Chief Ronitaa Italia and Radeesh Rattnakar Shetty
 2. VIP Lounge designed by Shernavaz Bharucha, in collaboration with The Purple Turtles, Oorjaa and greenery by Make My Garden
 3. Editor in Chief Ronitaa Italia and Shernavaz Bharucha
 4. Chetana and Anil Kumble 5. Naresh Narasimhan, Shernavaz Bharucha, Vivek Gupta and Joya Nandurdikar 6. Kunal Khandelwal 7. Kumpal Vaid
 8. Smitha Zachariah 9. Raghunandan Gururaj, Nagendra Ramachandra, Sachin Shetty, Aditi Pai, Akshay Heranjali, Swapnil Valvatkar and Sujith Nair. 10. Priti Tatiya
 11. Priyank Mehta 12. Farah Agarwal and Piyush Mehra.
 13. Ashish Kesurvala 14. Ashish and Chetana Bhutada
 15. Tejal Mathur 16. Kalpak Shah, Torun Mathias, Farah Ahmed, Dhaval Shellugar, Alok Saraf and Sanchit Arora
 17. Khushboo Khandelwal 18. Vivek and Namrata Kini Radhakrishnan
 19. Manish Dixit and Hiren Patel 20. Canna Patel and Isha Parekh Shellugar

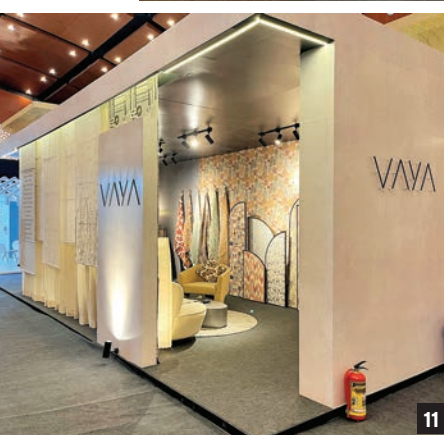




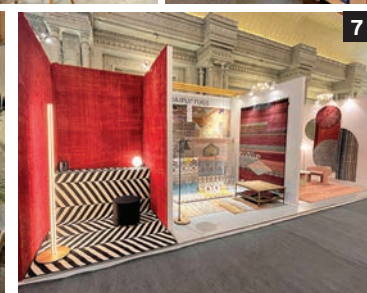
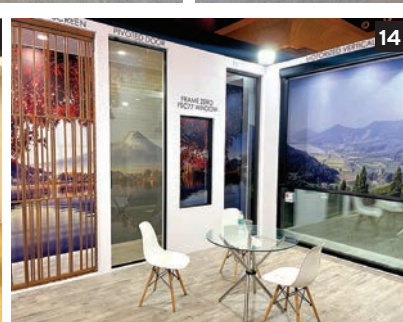
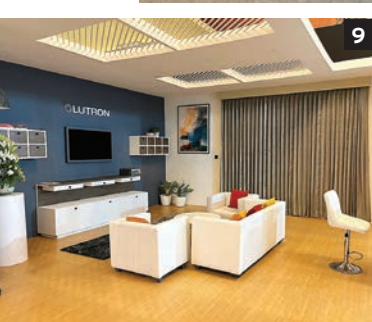


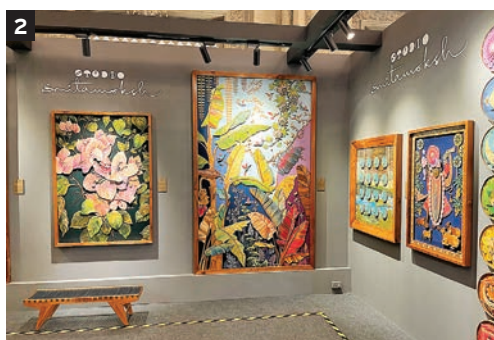
1. Huzefa Rangwala and Jasem Pirani 2. Ali Baldiwalla 3. Vivek Gupta, Abhay Jaipuria, Akshay Jaipuria and Swanzal Kak Kapoor
4. Shaunak Shah and Piyush Mehra 5. Torun Mathias, Shantanu Garg, Managing Editor Avril Noel Dsouza, Farah Ahmed, Dhaval Shellugur and Radeesh Rattnakar Shetty 6. Gowri Adappa, Shivani Ajmera, Disha Bhavsar and Arun Shekar Gowda 7. Party favours 8. Satyajeeet Patwardhan 9. Pashmin Shah and Managing Editor Avril Noel Dsouza
10. Amit Khanolkar, Proniti Chadda, Vishakha Chowdhry, Muninder Chowdhry, Ronitaa Italia and Shilpa Jain Balvally 11. Ajay Patil and Zubin Master 12. Siddhant Shivkumar of hansgrohe and Kirti Dodeja
13. Roberto Pauletto, Miguel Taberner, Roopesh Gupta, Pallavi Shetty, Ajay Pati, Zubin Master, Supraja Rao, Kiran Shetty and Alice Vitali.
14. Vimalanathan 15. Farah Agarwal and Sanchit Arora 16. Abhay Jain, Dhaval Shellagur, Thomas Paramil and Oomen Thomas



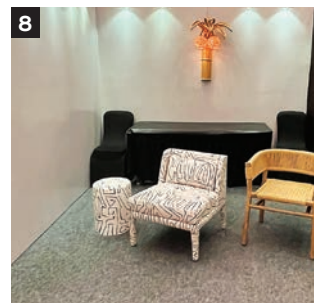


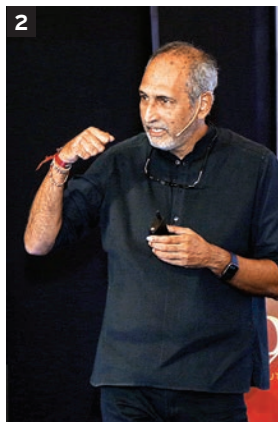
1. hansgrohe 2. Rise Group
3. P3 Architectural Solutions
4. YouKraft 5. Ro:sha 6. Escape by Creatomy
7. Jaipur Rugs 8. Baaya Design 9. Lutron
10. Tectona Grandis 11. VAYA Home
12. Focal, powered by Naim,
in association with AK International
13. Saint Gobain 14. Porta Finestra Design





1. Venzo Wood 2. Studio SmitaMoksh 3. Beruru 4. ZipScreen by Rollease Acmeda 5. Dhera Art Studio
6. Mandala Pottery 7. Stem Design 8. Deetee Home 9. KYNKYN 10. Installation by Sandilya Theuerkauf 11. Crimson
12. A Hundred Hands, with furniture from Freedom Tree 13. Tulio and NBT 14. Wooden Street
15. Samurai Home 16. Sansita. 17. MforMottle





1. Amitha Madan, Alan Abraham, Canna Patel and Hiren Patel
 2. Rahul Kadri 3. Aditi Pai, Aman Aggarwal, Shivani Ajmera, Kunal Maniar, Natasha Kocchar and Rahul Mistri 4. Zaki Shaikh
 5. Aahana Miller, Alfaz Miller and Editor in Chief Ronitaa Italia
 6. Power Talks audience 7. Priyanka Mehra
 8. Gunjan Das, Shernavaz Bharucha, Indrajit S. Kembhavi, Kavita Sastry, Anshul Chodha, Kavya Sheth.
 9. Shobhan Kothari 10. Vaishali Mangalvedhekar, Rudraksh Charan, Naresh Narasimhan, Maithili Raut and Puran Kumar
 11. Torun Mathias, Farah Agarwal, Vinitha Amarnathan and Shantanu Garg





1. Editor in Chief Ronitaa Italia and Maithili Raut
2. Puran Kumar and Rhea Mehta
3. Piyush Mehra, Priyanka Mehra and Munawwar Sharifi
4. Emcee for the Trends Excellence Awards ceremony
5. Rahul Kadri and Vaishali Mangalvedhekar
6. Swanzal Kak Kapoor, Sachin Rastogi and Huzefa Rangwala
7. Abhijeet Sonar of hansgrohe, Jasem Pirani, Priyanka Mehra and Piyush Mehra
8. Vivek Gupta and Srijit Srinivas
9. Anand Menon, Jayesh Ganesh and Shobhan Kothari
10. Editor in Chief Ronitaa Italia, Shernavaz Bharucha, Deepa.S. Wani and Sandeep Umapathy
11. Bijoy Ramachandran, Dhaval Shellugar, Farah Ahmed and Sunitha Kondur.
12. Editor in Chief Ronitaa Italia, T M Thomas and Shernavaz Bharucha
13. Guests at the Trends Excellence Awards ceremony
14. Swanzal Kak Kapoor, Nishan M and Huzefa Rangwala
15. Suneet Langer
16. Tejal Mathur, Nivedita and Kiran Shetty
17. Rajesh Devadiga, Anand Sen, Mohammad and Shahili Haroon
18. Akshay Heranjal and Purvi Tank
19. Alok Saraf, Kayzad Shroff and Torun Mathias



CELEBRATING GREATNESS THROUGH THE YEARS

An introspective on the lineage of the country's most distinguished awards ceremony

At TRENDS, we encourage and showcase works of international and Indian architects, interior designers and industry-related professionals. With an aim to honour and accolade the utmost level of creativity and design, TRENDS introduced TRENDS Excellence Awards for Architecture & Design.

Now in its eighth year, TRENDS EXCELLENCE AWARDS FOR ARCHITECTURE & DESIGN is undeniably India's most sought-after design award.

Presented by Home & Design TRENDS magazine, through the years the awards aims to accolade the utmost level of creativity, innovation, originality and inspiring practices in the field of Indian architecture, interiors and design. The awards are an endeavour to showcase the best in architecture and design projects, concepts, forms and practices in the country.

The categories cover the whole spectrum of the architecture and design milieu - architecture, interior design, product design and visual design. Our judges define the TRENDS Awards each year – and each year we bring forth a stellar group; of extraordinary individuals who have shaped or are shaping the Indian architecture and design milieu. If it is just not just plain, simple, unequivocal excellence of design practice, then it will be out-of-the-box, new thinking that a TRENDS judge will look for in the entries.

Each year, the awards witness a slew of quality projects from India's top architecture and design firms, and this year has been no different. This edition of the awards saw the participation of entries from across India, representing the benchmark that has set the standard for design discourse in India. **H&DT**



JURY MEET

Snapshots from the selection process of identifying the winners of the 8th edition of the TRENDS Excellence Awards for Architecture & Design



Identifying

the winning projects and practices of the TRENDS Awards is always an exacting process, and this year was no different. The jury comprising Neesha Alwani and Shruti Jalan of ns*a Architecture and Interiors, Rahul Kadri of IMK Architects, Rooshad Shroff of the eponymous design firm, Zubin Master of Design Matrix and Home & Design TRENDS Editor in Chief Ronitaa Italia put their elbow to the grease to shortlist some of India's best architecture and design projects from over 3,500 entries.

The jury mulled over the specs, layouts and plans across the categories of architecture, interior design, product design and visual design. The awards saw participation from firms across the country with some very impressive projects. As with every year, the jury adopted a transparent process, with each member bringing a unique set of sensibilities to the table.

Settling on a winner involves a thorough analysis of each entry, regarding the intricate nuances and finer details of design, besides its environmental, functional and aesthetic impact. This made the selection process contemplative and trying for the jury, who after passionate debates and rounds of discussions, came to a unanimous decision. **H&DT**



GET TO KNOW THE JURORS

Feature AVNI RAUT

Neesha Alwani

DESIGN PRINCIPAL,
NS*A ARCHITECTURE AND INTERIORS



IMAGE SULEIMAN MERCHANT

It was a trip to New York and witnessing the towering structures there, that really sparked Neesha's interest in built forms. Being technically inclined, the skyscrapers of the city intrigued her with respect to their engineering aspects and this curiosity eventually led to her pursuing architecture as a profession. Neesha completed her Bachelors of Architecture from Kamla Raheja Vidhyanidhi Institute of Architecture in Mumbai and then went on to work with architect Nozer Wadia who was an important influence in the early stages of her career. It was here that Neesha met Shruti Jalan, whom she would eventually go on to set up their firm ns*a Architecture and Interiors with.

The duo has shaped their practice on their strong beliefs, individualistic strengths and thought processes that are perfectly in sync with each other. "We both put our heads together and design; our design philosophy is the same and we think in the same direction. It's very strange,

I'll start drawing something and she will complete it, and vice versa," she says.

Neesha's perceptive nature enables her to minutely break down and interpret client briefs, identify the eventual objective and translate the intangibles into stimulating spatial experiences for the end-users, be it designing commercial spaces where aspects like branding are a governing factor or residential projects where the homeowners' preferences take precedence. She places a keen emphasis on functionality, seamlessly integrating aesthetics into the equation and deems collaborations an important part of projects to explore newer possibilities in spatial design.

Speaking about the firm's upcoming projects, she says, "We have a mixed bag of projects in the pipeline comprising hospitality, commercial and residential projects. We never shy away from challenges and are keen to explore projects that lead us on new pathways."

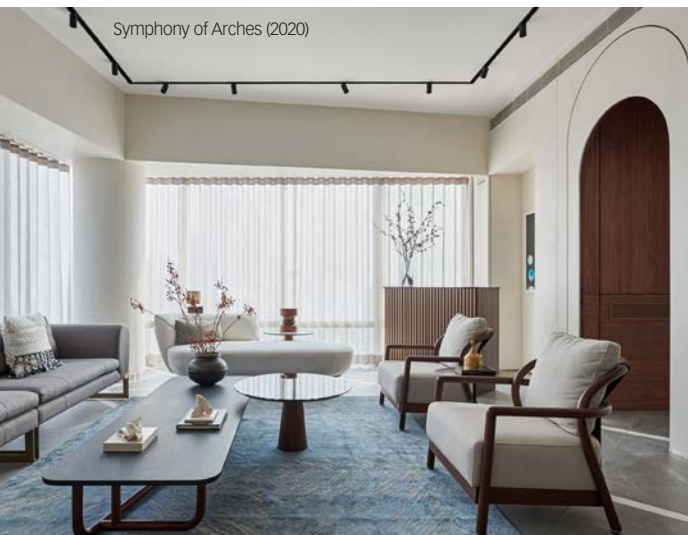


IMAGE SULEIMAN MERCHANT





Apartment by the Sea (2017)

IMAGE SEBASTIAN ZACHARIAH



Apartment on Carmichael Road (2018)

IMAGE SULEIMAN MERCHANT

“We believe that collaborations lead to innovative solutions and working together with the right people is like connecting the dots to complete the larger picture.”

— Neesha Alwani, Design Principal, ns*a Architecture and Interiors



BP House (2019)

IMAGE SULEIMAN MERCHANT

Rahul Kadri

PARTNER AND PRINCIPAL
ARCHITECT, IMK ARCHITECTS

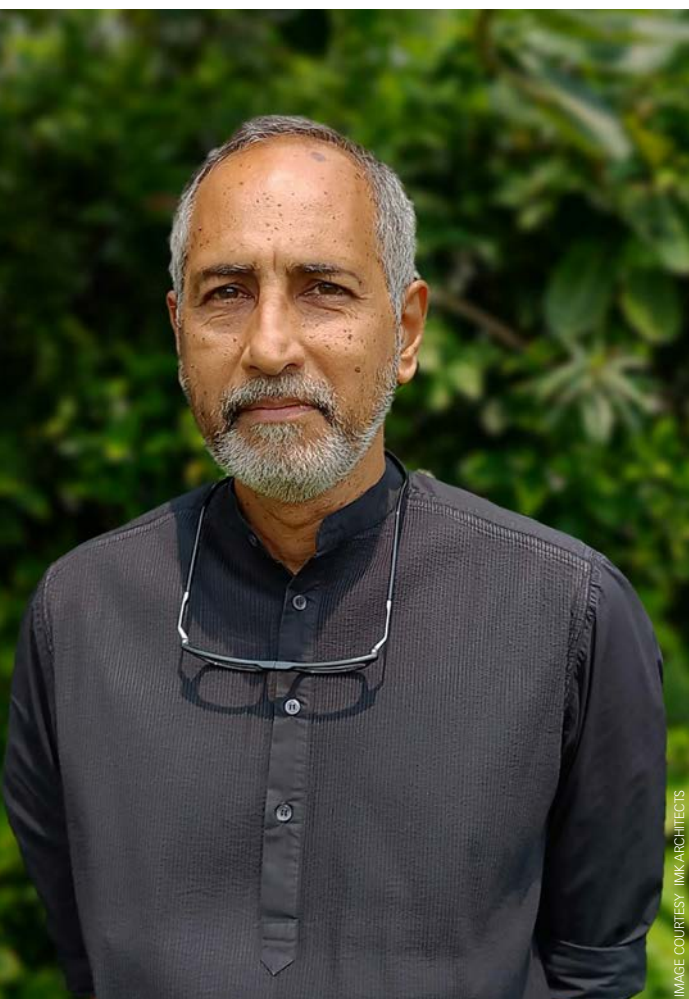


IMAGE COURTESY IMK ARCHITECTS

Despite being exposed to architecture at a young age, Rahul had different aspirations for himself initially. He was fond of horses and wished to own a stud farm. It was at his boarding school in Nainital, where he spent a considerable amount of time strolling in the forests around, that he gradually became sensitive to nature and developed a keen desire to design contextual spaces that sit in harmony with their surroundings. While this had already nudged him towards becoming an architect, what cemented his decision to take up this profession were the drives his father took him and his siblings on to show them the buildings designed by him in Mumbai. “He took us on drives, and it was really those journeys that made me realise what a difference it makes when you start looking at buildings in a different way,” reminisces Rahul.

He studied architecture at the Academy of Architecture, Mumbai, and then attended the University of Michigan in USA, to pursue his Master's in Urban and Regional Planning.

He interned with architect and theorist Christopher Alexander for about six months, after which he worked for 13 years at IMK Architects, an architecture and urban design practice set up by his father in 1957. Today, Rahul is the partner and principal architect at that firm. One of the most difficult phases of his professional journey has been taking over the reins from his father and the consequent transition, that saw certain changes with respect to bringing in new clients and reworking the design processes and frameworks.

At IMK Architects, every project that is undertaken is rooted in a biophilic narrative and ecologically conscious building practices with an aim to create spaces that go beyond their functional purpose to enhance the emotional, physical and psychological well-being of the end-users. “This is the cornerstone of our practice at IMK Architects – to create vibrant, biophilic, ecologically-sensitive spaces where lives flourish and activities thrive,” concludes Rahul.



Auric Hall (2019)

IMAGE RAJESH VORA



Jindal Vidya Mandir (2020)

IMAGE HEWANT PATIL



IMAGE RAJESH VORA

"I was influenced by the work and writings of British-American architect and design theorist Christopher Alexander and American architect Charles Moore. Their ideas of holistic architecture and social architecture particularly influenced me. Reading 'The Pattern Language' and 'The Timeless Way of Building' were the biggest watershed moments in my life."

— Rahul Kadri, Partner and Principal Architect, IMK Architects



IMAGE RAJESH VORA

Rooshad Shroff

ARCHITECT AND FOUNDER,
ROOSHAD SHROFF



IMAGE PANKAJ ANAND

Embroidered C-Sofa



IMAGE NEVILLE SUKHIA

“Architecture runs in my family,” says Rooshad. “My father, my older brother and I are all architects and my mother is an interiors designer. In fact, when we were young our parents hoped that of the two of us, at least one would forge a different career path! But I pursued my undergraduate degree (B. Arch) at Cornell University, and went on to obtain my Masters from Harvard University’s Graduate School of Design (M. Arch).” Today, he spearheads his eponymous architecture and design firm and has projects spanning different categories of design to his credit, including architecture, interiors, furniture design, exhibitions, visual merchandising and events.

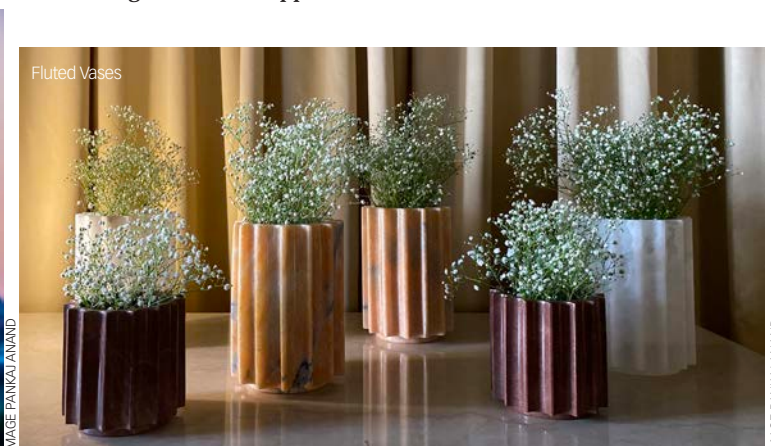
Rooshad has centred his practice on the philosophy of integrated design, and with experimentation and exploration at its core, he has been able to establish himself as a designer who brings a nuanced approach

and a distinctive touch to his projects, irrespective of scale and type. His efforts to contemporise India’s traditional arts and crafts have been realised through his wide range of novel décor collections, created in collaboration with artisans and craftsmen from across the country. “Post my education I returned to India and set up a private practice, with a special focus on Indian artisanry; and in doing so, I gained a whole new education in craftsmanship, one which cannot be taught at any university, but must be experienced first-hand,” shares Rooshad.

On a concluding note, he speaks about the firm’s ongoing work, “In recent times, the studio has undertaken some major architectural projects, which were on the backburner for a while as we pursued other assignments. I am currently enjoying this return to my fundamentals.”



Alabaster Wall Scones



Fluted Vases

IMAGE PANKAJ ANAND



"As an architect, there is this constant awareness of your environment. I believe that the sensory aspect of design is of vital importance; one does not focus on purely the aesthetics of geometry and buildings, there is also an emphasis on experiencing your surroundings."

— Rooshad Shroff, Founder and Architect, Rooshad Shroff

Shruti Jalan

DESIGN PRINCIPAL,
NS*A ARCHITECTURE AND INTERIORS



IMAGE SULEIMAN MERCHANT

Shruti has always been artistically inclined and had she not become an interior designer, she would have undoubtedly explored a career in art. “Art has been my first love,” says Shruti. “But my passion and interest in design has always been there since childhood. I loved everything about design and seeing how spaces can transform.” She completed her Interior Designing and Decoration degree from Sophia Polytechnic and thereafter trained under architect Nozer Wadia before going on to establish her own firm with Neesha Alwani, whom she met while working at Nozer Wadia Associates.

The two effortlessly complement each other’s aesthetic sensibilities and are almost always aligned on their vision for projects. It was no surprise then, that when projects started coming their way individually, they felt it best to come together and set

up a practice. With clear design processes in place and work ethics governed by consistency and commitment, the duo has made a mark in the field with their work and continue to grow their portfolio that spans primarily residential spaces, along with projects in the commercial, retail and hospitality sectors too.

Reconciling creative calls with pragmatic solutions, Shruti brings in a balanced viewpoint to each project, devising spaces that resonate with the clients. She is able to effectively convey design concepts and their vision for the space with ease, streamlining communication with them and ensuring a rapport is established. With a sharp eye for detail, Shruti oversees every aspect of the project with utmost precision.

Speaking about their future plans, she says, “We are growing exponentially, moving to a larger space and lots of interesting projects up ahead, so we are really excited with this new phase.”



Apartment on
Carmichael Road (2018)

IMAGE SULEIMAN MERCHANT



BP House (2019)



Symphony of
Arches (2020)

IMAGES SULEIMAN MERCHANT



Monochrome
apartment (2021)



IMAGE SEBASTIAN ZACHARIAH

"Our work reflects our personalities and we believe that a simplistic approach to design can lead to creating spaces that are functional and aesthetic at the same time."

— Shruti Jalan, Design Principal, ns*a Architecture and Interiors

Zubin Master

CO-FOUNDER AND DIRECTOR,
DESIGN MATRIX



With an experience of over 30 years, Zubin brings a practical, discerning and detail-oriented approach to the projects that he takes on. He has been influenced, in large part, by Nozer Panthaky under whom he began his training back in 1990. Having worked at M/S Talati & Panthaky Associated Pvt Ltd in the nascent stages of his career, he imbibed crucial learnings that helped him grow immensely and equipped him to tackle projects in a holistic manner. "My internship under Nozer Panthaky involved an extensive learning of all facets of design, from how to hold a tape in the correct way, to understanding the requirements and limitations of every project, accurate detailing of every design proposed, of materials, handling clients and contractors, and more," explains Zubin.

Today, he leads his firm

Design Matrix along with co-founders Ruby Khanna and Suleiman Bhanji, and they have evolved it into a versatile practice with projects of diverse nature in their portfolio. Zubin's strengths lie in interpreting client briefs, ascertaining what a project demands and then addressing every factor that affects its outcome while infusing his own personal touch in the design. "It's a challenge to decipher clients' preferences," he says. "In today's world of 'Pinterest' and 'Insta', the designer has to very cleverly manoeuvre their sensibility in amalgamating clients' selections, dissecting it, and serving it back in your own language, without disrespecting their taste." His own principles take shape from Frank Lloyd Wright's philosophy of 'form and function are one' and his sensibilities lean towards crafting spaces that are organic



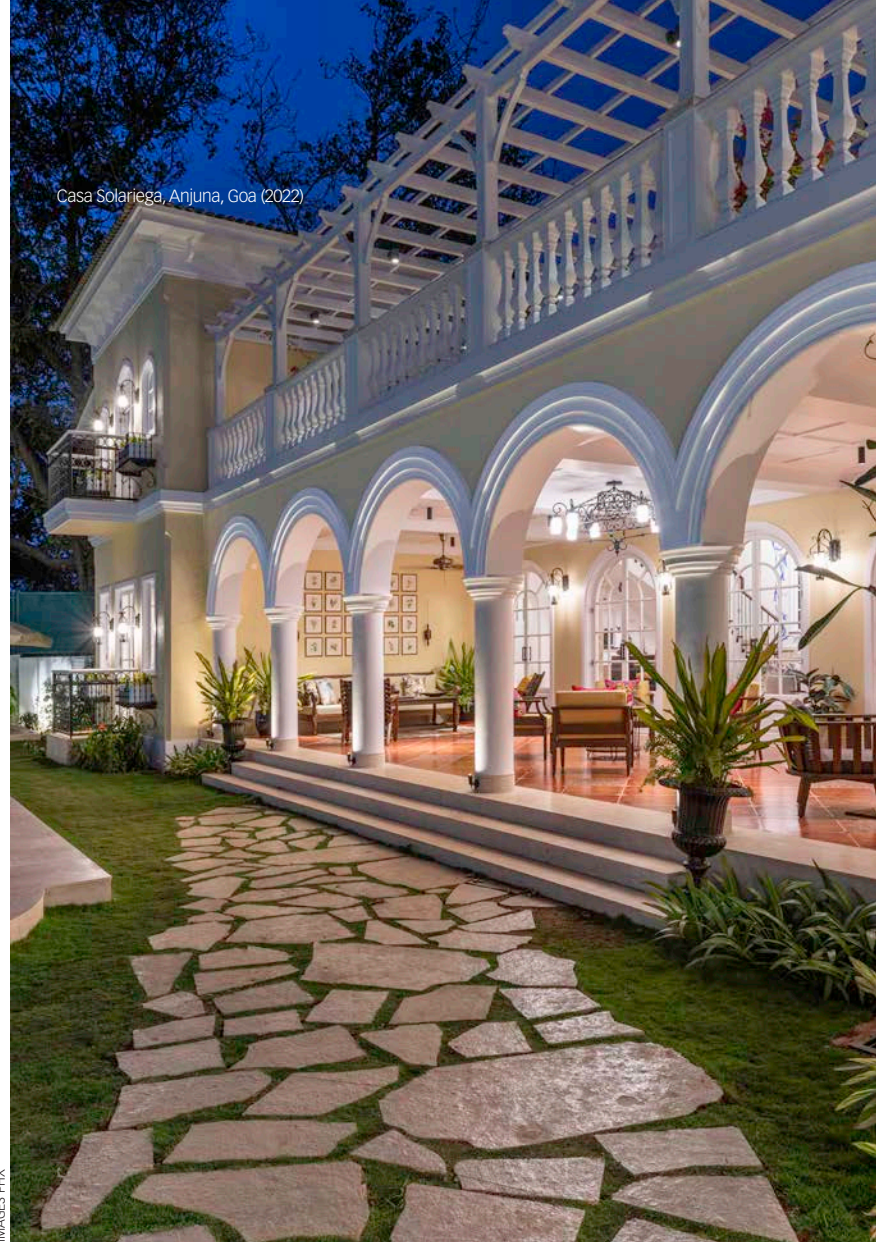
TRENDS EXCELLENCE AWARDS

**"My motto is always
'sky is the limit'.
What's in store, one
can never prophesize.
But when one has
belief in one's
abilities and a positive
approach to meet
any situation, then
all that's in store can
only be good."**

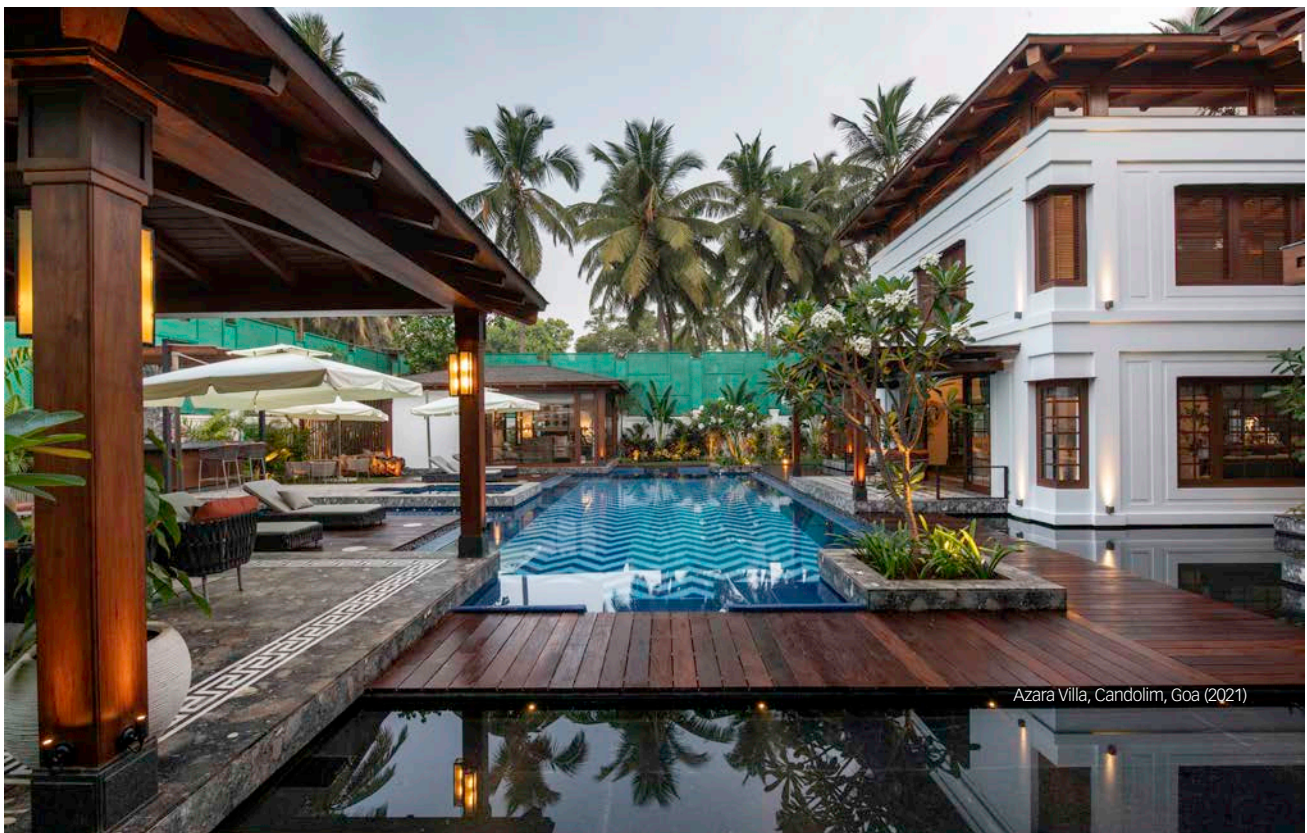
— Zubin Master, Co-Founder and Director,
Design Matrix

and minimalistic in their appeal,
and effortlessly complement
their surroundings.

Zubin's knack of tapping into
the full potential of each project
and crafting enriching spaces
that fulfil clients' aspirations to
a tee, has enabled him to not
only forge meaningful and long-
lasting relationships with them,
but also carve a niche for himself
in the industry.



IMAGES PHX



Azara Villa, Candolim, Goa (2021)

and the winners are...



TRENDS EXCELLENCE AWARDS
Best Practice 2021

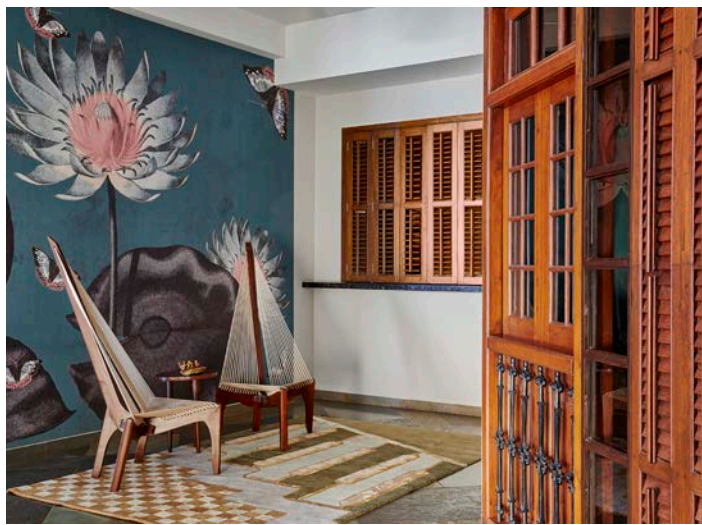
WINNER
reD ARCHITECTS



PROJECT IMAGES COURTESY
RED ARCHITECTS



IMAGE SHAMANTH PATIL J



While no major changes were made to the original spatial flow, the team made small thoughtful edits that either added depth or lent more value to the spaces. Every element is a thoughtful addition to the overall scheme.

**“Designed with care, this home is open yet discreet,
vibrant yet broody...it’s a celebration of a lifestyle that
embraces characteristics”**

— Team reD Architects

TRENDS EXCELLENCE AWARDS
Best Practice 2021

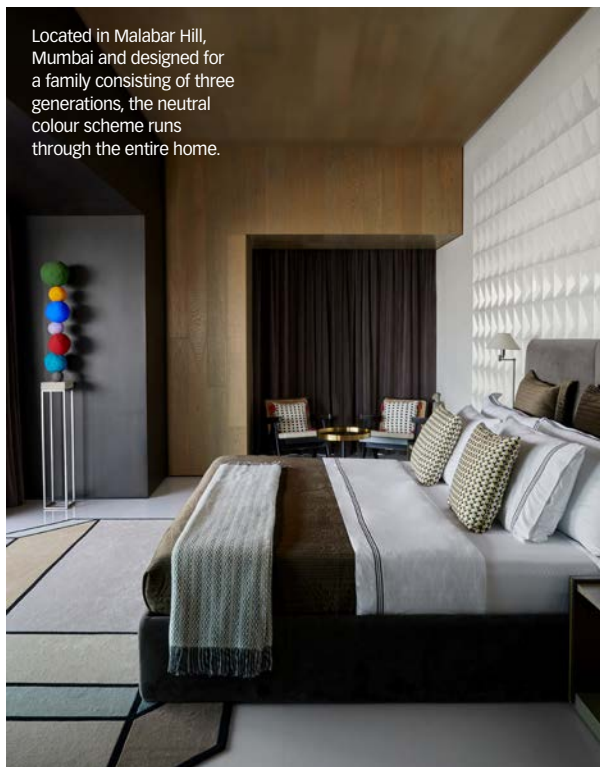
WINNER
AA HOME



“Truly eclectic, this home is designed as an embodiment of craftsmanship and is suffused with luxury and Wabi-Sabi philosophy.”

— Team AA Home

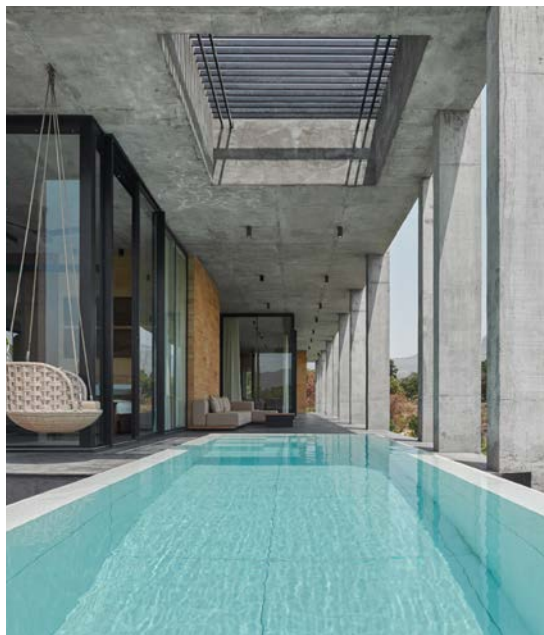
Located in Malabar Hill, Mumbai and designed for a family consisting of three generations, the neutral colour scheme runs through the entire home.



IMAGES COURTESY AA HOME

TRENDS EXCELLENCE AWARDS
Architecture
Residential Project 2021

WINNER
SHROFFLEÓN



PROJECT IMAGES COURTESY
SHROFFLEÓN



IMAGE SHAMANTH PATIL J



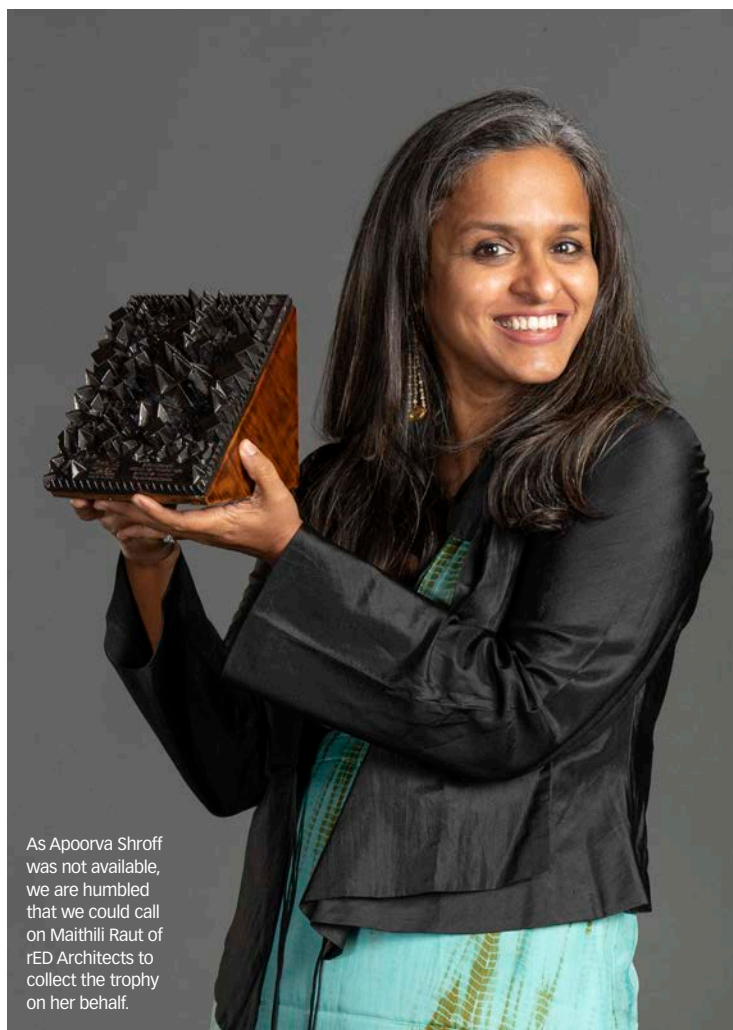
Anchored on 3.5 acres of farmland, this home in Karjat is moulded as a monolithic mass of architecture. The building docks itself in liquid stone as an escape from the rigor of city life. Minimalism is the protagonist of the building's design narration. The built form mimics the natural rusticity of its surroundings by standing bare against the sun to weather gracefully.

"In response to the pre-existing thriving farmland, the anatomy of the two-BHK architecture choreographs itself respectfully to blend in rather than to stand out."

— Team SHROFFLEÓN

TRENDS EXCELLENCE AWARDS
Architecture
Residential Project 2021

WINNER
APOORVA SHROFF
for reD Architects



As Apoorva Shroff was not available, we are humbled that we could call on Maithili Raut of reD Architects to collect the trophy on her behalf.

IMAGE SHAMANTH PATIL J



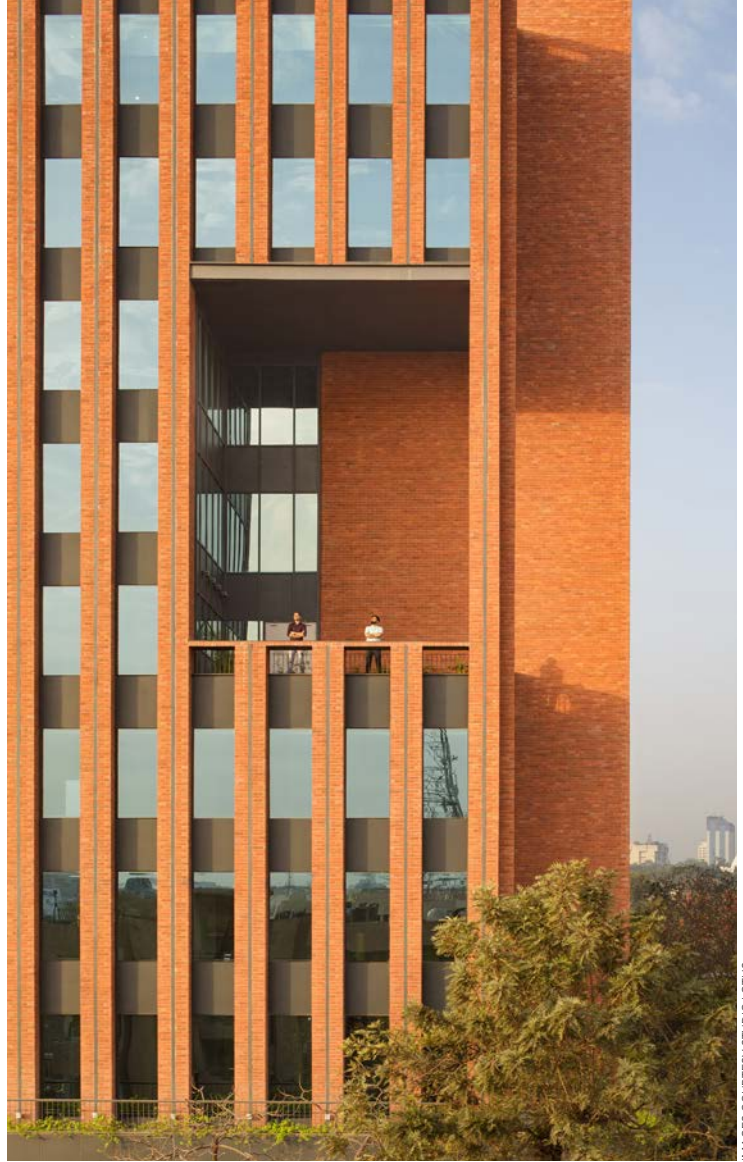
"Airavat is an ode to the lushness and beauty of the mountains. This massive home melds concrete with metal and is aptly titled, 'Home in the clouds'."

— Apoorva Shroff, Ex-partner, reD Architects

PROJECT IMAGES COURTESY
reD ARCHITECTS

TRENDS EXCELLENCE AWARDS
Architecture
Commercial Project 2021

WINNER
STUDIO LOTUS



IMAGES COURTESY STUDIO LOTUS



Located in Delhi's Okhla industrial area, Max House is a corporate campus. The tower's façade comprises distinctive alternating bands of brick and glass and is punctuated by spandrel panels, deep-set balconies, and community terraces. The floor plate configuration, in conjunction with the facade's low wall-to-window ratio of 60:40 and shading spandrels to cut down solar glare, significantly elevate the passive design parameters of the building.

"Max House marks a pronounced shift from the sea of soulless glass towers sprouting across Delhi's business districts; thus, attempting to create an alternative benchmark for commercial architecture in the Indian context."

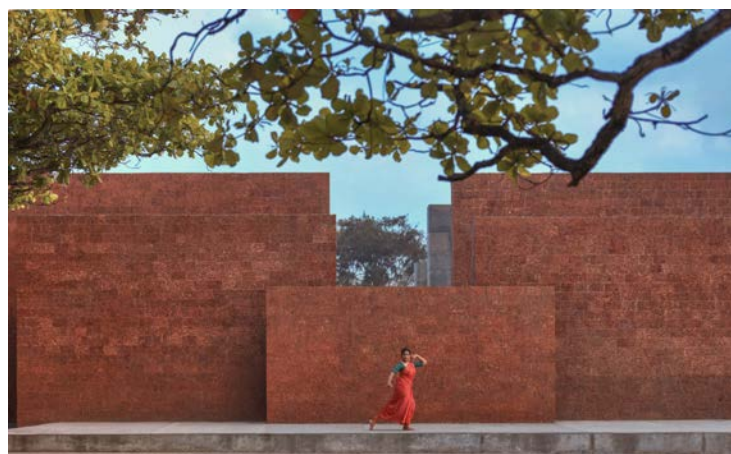
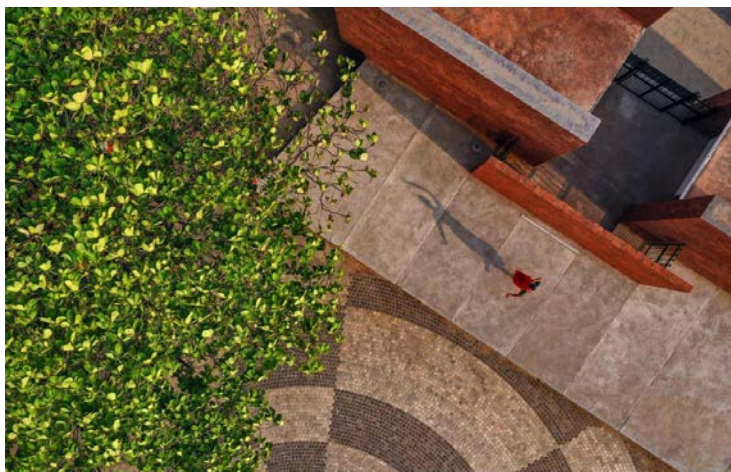
— Team Studio Lotus

TRENDS EXCELLENCE AWARDS
Architecture
Public/Institutional Project 2021

WINNER
DE EARTH



IMAGE SHAMANTH PATIL J



PROJECT IMAGES COURTESY
 DE EARTH



Freedom Square serves as a multifunctional space aimed at revitalising the entire stretch of beach as a nodal point not only from the perspective of public life but also as a historical marker. Abstract wall sculptures depicting the historic Salt Satyagraha arouses historical memories and points towards the invisible roots of the city. Locally sourced natural materials add a contextual charm.

“This project of 36,237.88sqft was conceptualised and realised with design as an integrated solution. Freedom square is a standing testimony of the endless potential of architecture and urban inserts, in inspiring a better life filled with love and pride.”

— Team De Earth

TRENDS EXCELLENCE AWARDS

Architecture

Sustainable Project 2021

WINNER

ZERO ENERGY DESIGN LAB

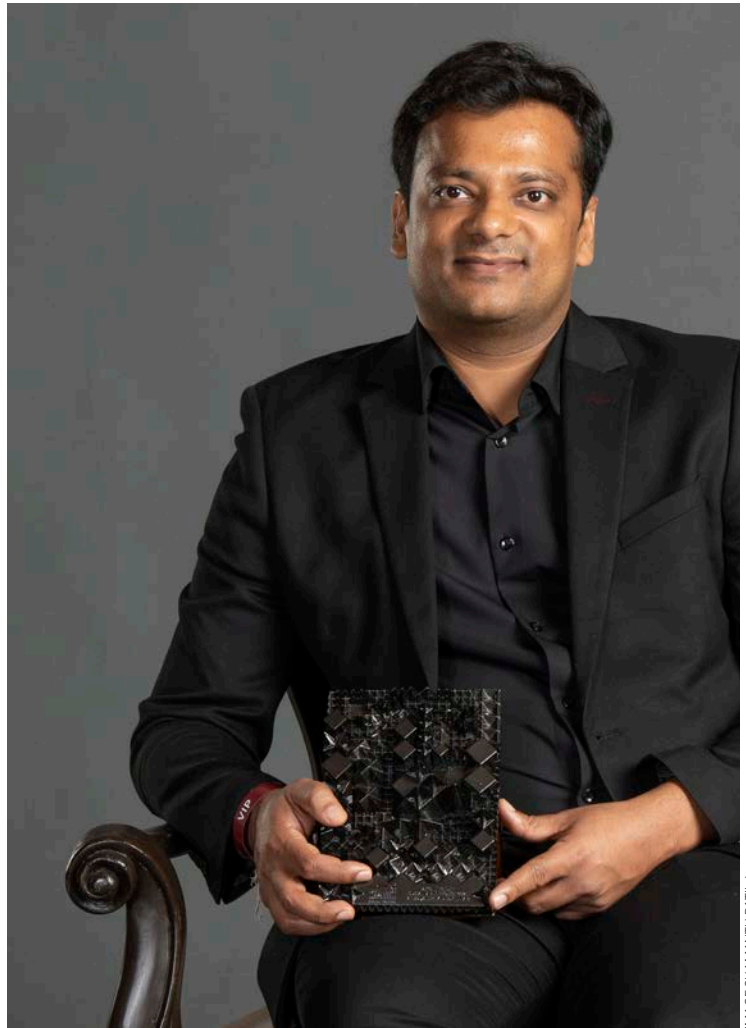


IMAGE SHAMANTH PATIL J



The design takes cues from the rural context of the site and unfolds as a series of multidimensional spaces, through the method of adaptive layering. The hostel's design empowers students with freedom of movement within an environment that prioritises thermal comfort and functionality to become an exemplar of zero energy design.

PROJECT IMAGES COURTESY
ZERO ENERGY DESIGN LAB

“The girls’ hostel block in Gurugram explores the intersection of education and sustainability through the lens of the vernacular.”

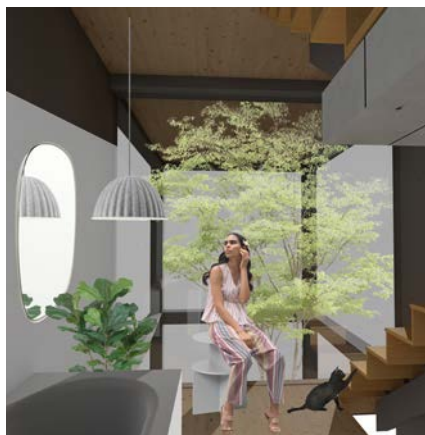
— Team Zero Energy Design Lab

TRENDS EXCELLENCE AWARDS
Architecture
Best Concept For
An Unbuilt Project 2021

WINNER
STUDIO SARANSH



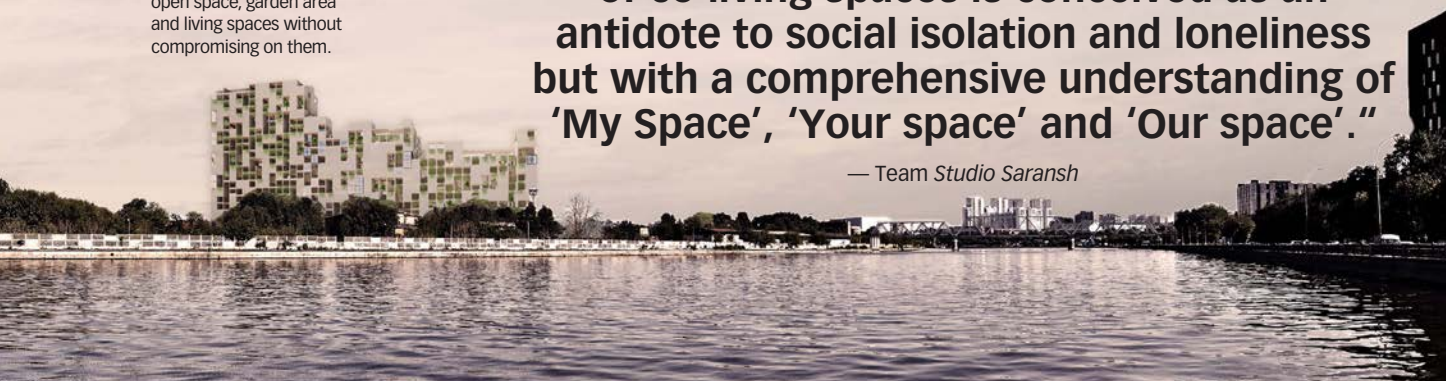
IMAGE SHAMANTH PATIL



'Dacha in the city: S, M, L and XL', envisions a balance between community life and nature. The concept provides flexibility to choose from the variations of living unit, with fundamental elements: semi open space, garden area and living spaces without compromising on them.

"Co-living as a concept is a solution for housing in the urban fabric as urban migration is a chronic issue. Here the idea of co-living spaces is conceived as an antidote to social isolation and loneliness but with a comprehensive understanding of 'My Space', 'Your space' and 'Our space'."

— Team Studio Saransh



PROJECT IMAGES COURTESY
STUDIO SARANSH

TRENDS EXCELLENCE AWARDS
Architecture
Best Concept For
An Unbuilt Project 2021

WINNER
ARCHITECTURE DISCIPLINE



IMAGES COURTESY
ARCHITECTURE DISCIPLINE



Life Community Medical Facility (LifeCMF) is a comprehensive community medical facility that is composed of shipping containers repurposed into prefabricated pods for different medical functions. Each module is prefabricated with furniture and equipment to cater to a range of functions, from diagnostics and intensive care to isolation and recovery units. Corridors and lift core modules are also fabricated from the containers to create connections between functional modules.

“LifeCMF presents a sustainable, affordable, and scalable healthcare model, using discarded shipping containers for their durability and structural integrity. Its modular assembly allows it to be airlifted to remote regions and vulnerable communities, like disaster-struck areas, war zones, or refugee colonies.”

— Team Architecture Discipline

TRENDS EXCELLENCE AWARDS

Architecture

Leisure Project 2021

WINNER

SJK ARCHITECTS



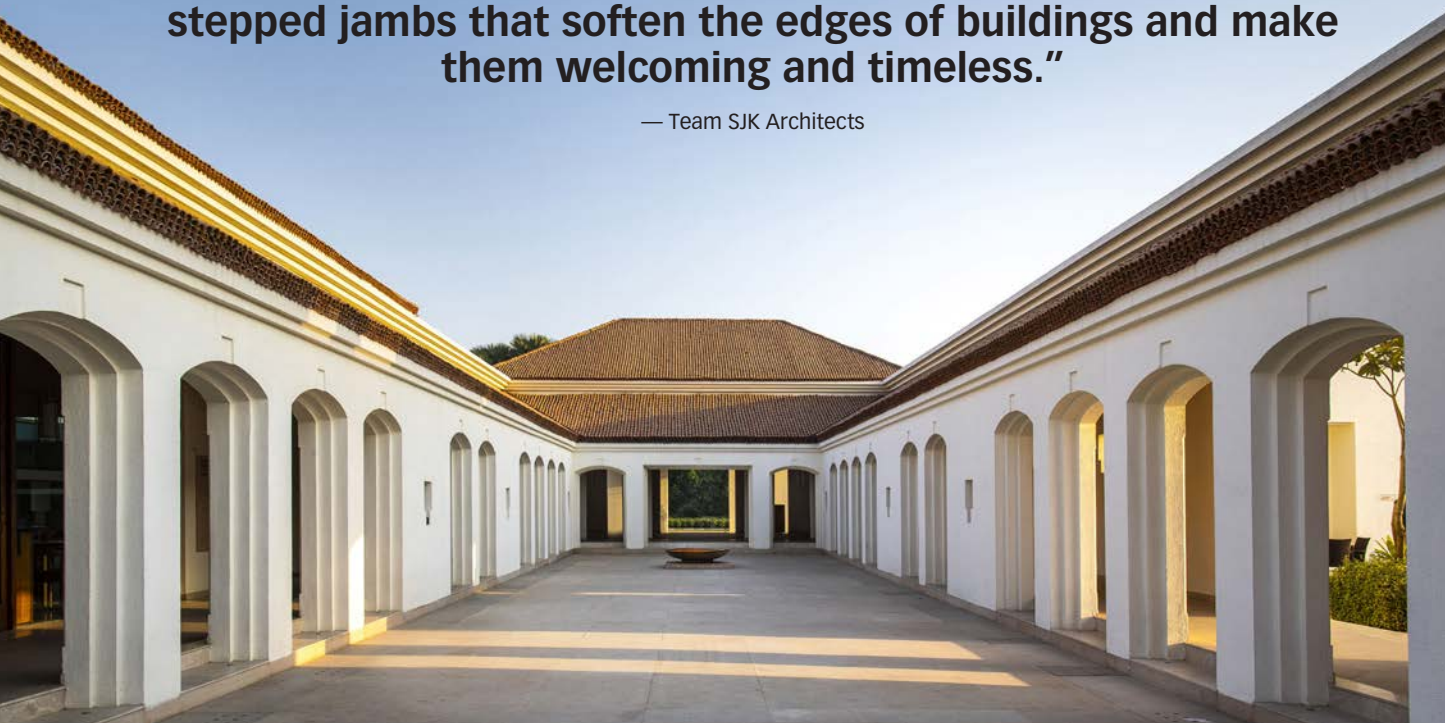
The vocabulary of the building, using the craftsmanship of brick vaults, pillars and architraves also attempt to convey the emotions that most embody the Buddhist practice – wisdom, courage, compassion, forbearance and perseverance. Spread over 4.5 acres, the courtyards and water bodies, and the sloping roofscapes create the conditions for an ecologically sustainable and highly contextual resort for Buddhist pilgrims.



IMAGE SHAMANTH PATIL J

“The hotel at Bodhgaya gently uses the vocabulary of brick details from the Buddhist trail - vaults to corbelled arches to stepped jambs that soften the edges of buildings and make them welcoming and timeless.”

— Team SJK Architects



PROJECT IMAGES COURTESY
SJK ARCHITECTS

TRENDS EXCELLENCE AWARDS
Interior Design
Residential Interiors 2021

WINNER
AA HOME



The powder room characterised by the 10ft-tall wash basin is skillfully hand carved from a single block of granite in Udaipur.

IMAGES COURTESY AA HOME

"This modern home is the definition of contemporary style, subtle beauty and perfect imperfection. With a combination of open and enclosed spaces through a series of vanishing thresholds, it is amply lit and brings the outside-in."

— Team AA Home



TRENDS EXCELLENCE AWARDS
Interior Design
Public/Institutional Interiors 2021

WINNER
ARCHOHM CONSULTS
PRIVATE LIMITED



The JayaPrakash Narayan Interpretation Centre / Museum of Socialism in Lucknow has been conceived to galvanise broader civic and cultural exchange through its public architecture. The wedge-shaped museum is actually a slice of the same shape and size carved out from the mass of the International Centre building and juxtaposed with it, thus creating its own identity even while owing allegiance to it through a related program and the vocabulary of architecture.



IMAGES COURTESY ARCHOHM
CONSULTS PRIVATE LIMITED

“The contemporary nature of the museum’s architecture takes responsibility for creating what will be tomorrow’s history while narrating the current one.”

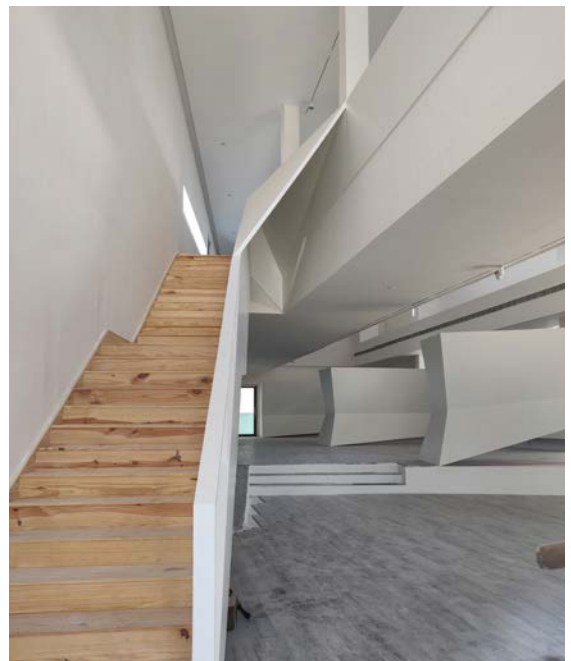
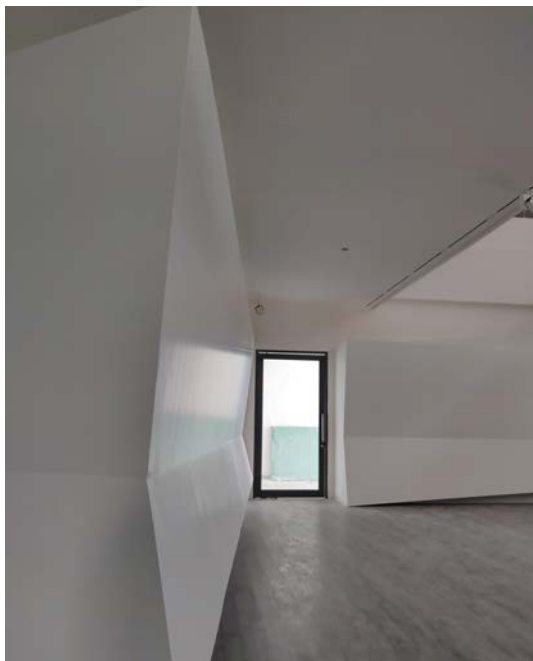
— Team Archohm Consults Private Limited

TRENDS EXCELLENCE AWARDS
Interior Design
Public/Institutional Interiors 2021

WINNER
URBAN FRAME PVT LTD



From the exterior to the interior, the seamless continuity of the dynamic form gets reciprocated through the interior display panels. The materials, lighting design, wall and flooring patterns, detail accuracy, and execution make this a one-of-a-kind museum experience in India.



PROJECT IMAGES COURTESY
URBAN FRAME PVT LTD

“The Hall of Fame is the marquee building at Padukone - Dravid Centre for Sports Excellence, Bengaluru. The architecture language took birth from the idea of infinity and the infinite possibilities of achieving sports excellence.”

—Team Urban Frame Pvt Ltd

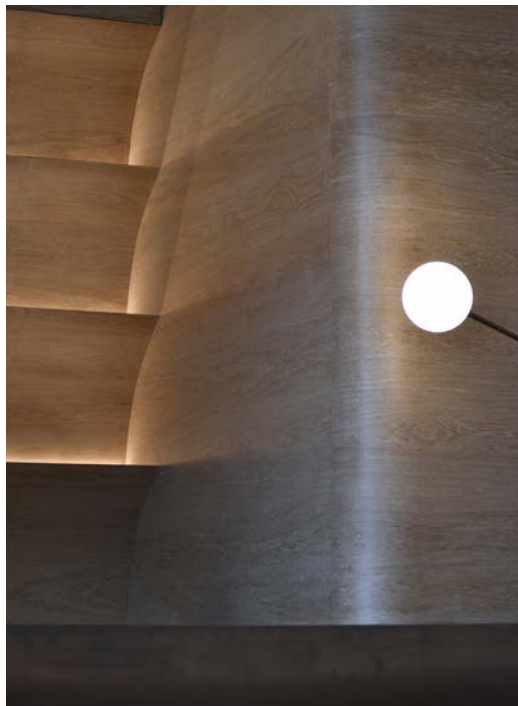
TRENDS EXCELLENCE AWARDS
Interior Design
Bar/Restaurant 2021

WINNER
AA HOME



Imbuing a touch of seamlessness with an overarching 'Wabi-Sabi' aesthetic, 'Sequel' is futuristic in its form and earthy at its core. Warm honey oak veneer runs across the floor onto the walls of the fine dine area with the Channapatna light looming 7ft above.

IMAGES COURTESY AA HOME



"Marrying modernity and subtlety through a fusion of craft and organic form - this rendition of 'Sequel' is a conformation of perfect imperfection."

— Team AA Home

TRENDS EXCELLENCE AWARDS
Interior Design
Workspace 2021

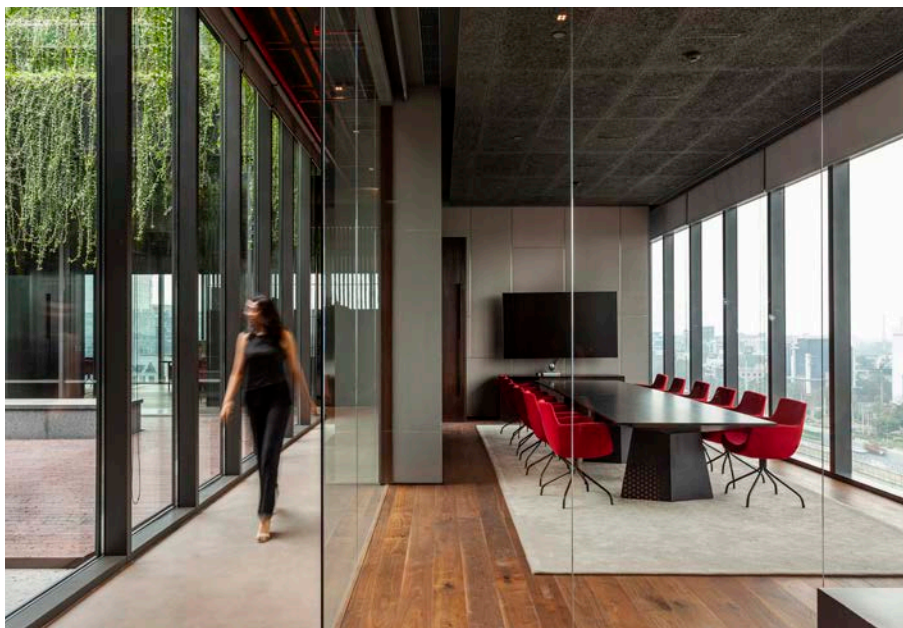
WINNER
ARCHITECTURE DISCIPLINE

IMAGES COURTESY
ARCHITECTURE DISCIPLINE



"The headquarters for East India Hotels in Gurugram is designed around maximum flexibility, with an open plan, movable partitions, and flexible modular furniture."

— Team Architecture Discipline



A decommissioned Cessna aircraft's 7 metre-long wing has been transformed into a table top, expressive of the owner's sci-fi odyssey.



TRENDS EXCELLENCE AWARDS

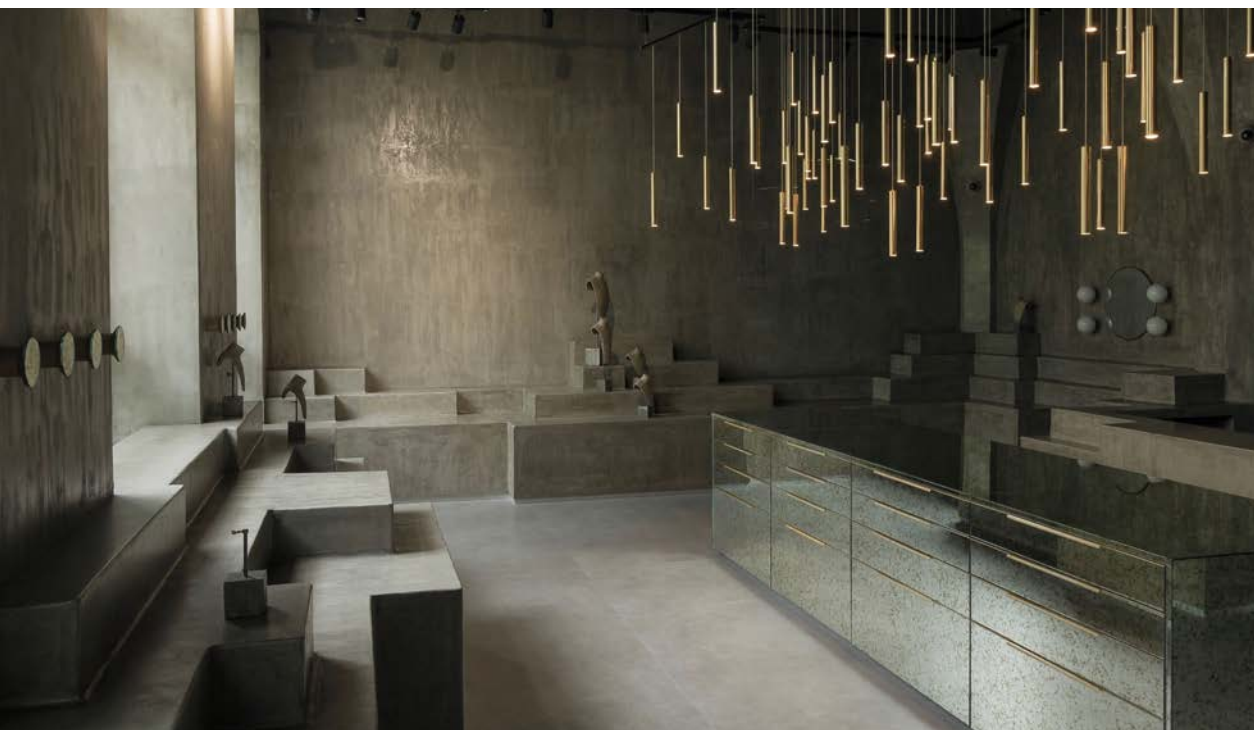
Interior Design *Retail Project 2021*

WINNER

SJK ARCHITECTS



IMAGE SHAMANTH PATIL J



In an area of 800sqft, rises a series of monolithic displays, that emerge from the floor and blend into the walls, all designed ergonomically and for a unique customer experience. The ins and outs in the stepped display form alcoves for the customer to engage with the products at an intimate scale while experiencing the contrasting scale of the space itself. The space celebrates the merchandise by being the perfect understated, yet bold backdrop for the sharp, edgy and colourful products to pop.

PROJECT IMAGES COURTESY
SJK ARCHITECTS

“The highlight of this project is the display, which facilitates maximum visibility of products and flexibility in terms of merchandising, coupled with hints of the ‘forest’ experience through the central pendants.”

—Team SJK Architects

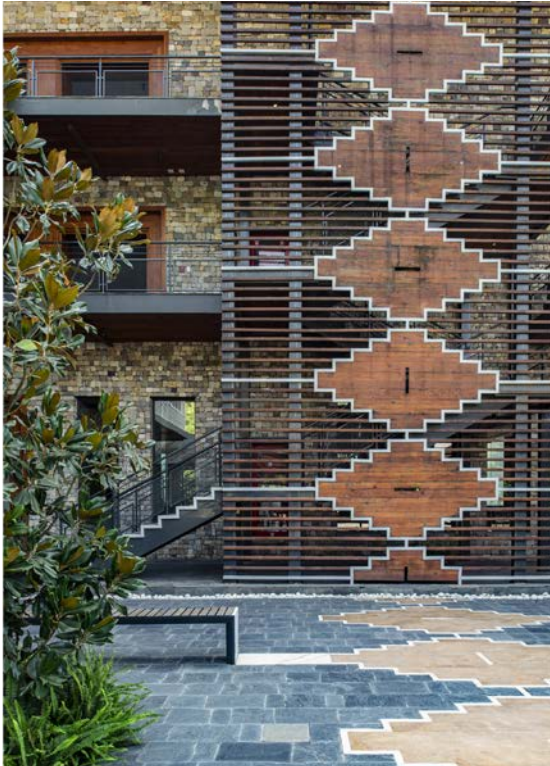
TRENDS EXCELLENCE AWARDS

Interior Design

Leisure Project 2021

WINNER

EDIFICE CONSULTANTS



The site planning mimics the traditional Himalayan villages, anchored around a Darbargadh, the traditional residence of local rajas or lords which further translates into the design. Local materials like the stone for cladding the structure, hardwood battens in ceilings, raw carved wood as bands along with the organic colour palette merge with the green oasis outside.



IMAGE SHAMANTH PATIL J



PROJECT IMAGES COURTESY
EDIFICE CONSULTANTS

“The Taj Resort and Spa in Rishikesh, Uttarakhand, is the morphology of the traditional Himalayan village with a structure that negotiates and creates a dialogue with the contours.”

— Team Edifice Consultants

TRENDS EXCELLENCE AWARDS
Product Design
Furniture Design 2021

WINNER
DESIGN



PRODUCT IMAGES COURTESY
DESIGN



IMAGE SHAMANTH PATIL J



"Station H; a solid anthropomorphism that defines the Danish ideology of a fulfilling life. Its minimalist design will blend right into the strong aromatic flavour of your coffee/tea. It is more than a beautiful piece of wood, due to its multiple uses."

— Team *Design*

TRENDS EXCELLENCE AWARDS
Product Design
Light Design 2021

WINNER
RHEA MEHTA DESIGN



PRODUCT IMAGES COURTESY
RHEA MEHTA DESIGN



IMAGE SHAMANTH PATIL J



"Inspired from 'The Wave' in Arizona, the forms of 'The Whim' have been developed after extensive form studies and detailed research on the beautiful sandstone rock formation. It is made in hand carved wood and can be customised based on the space."

— Team Rhea Mehta Design

TRENDS EXCELLENCE AWARDS
Visual Design
Architecture Photography 2021

WINNER
PS DESIGN



IMAGE SHAMANTH PATIL J

“Walking around the beautiful Milan courtyards, one comes across the subtle sound of a plane passing over your head. Looking up one can admire the beautiful unconscious silhouette the buildings create. With the clarity in the air you can clearly see the craft above and cannot help but feel weightless in that passing moment.”

— Piyush and Priyanka Mehra,
Principal Architects, P S Design

TRENDS EXCELLENCE AWARDS
Visual Design
Interiors Photography 2021

WINNER
TEAM INCLINED STUDIO

IMAGE COURTESY INCLINED STUDIO



“Udan Crematorium, designed by d6thD design studio, is located in Amalsad town in Gujarat. Spread over 2 acres of land, we wanted to convey the righteous idea of the architect and the detail he made this space with, keeping the sentiments of the families who have lost their loved ones.”

— Team Inclined Studio

TRENDS EXCELLENCE AWARDS *South Special*

WINNER
FADD STUDIO



IMAGE SHAMANTH PATIL J



PROJECT IMAGES COURTESY
FADD STUDIO



In this Bengaluru house, the use of straight, angular and parallel lines which seem to sometimes converge creates stunning optics of geometry that almost seem abstract. These are experienced by the movement from one level of the house to another. Understated furniture and Indian art paired with local materials imparts a sense of richness, tradition and timelessness.

"Of scales, volumes and epic proportions, the Brunton House is simply magnificent or magnificently simple in its design approach and philosophy."

— Team FADD Studio

TRENDS EXCELLENCE AWARDS *South Special*

WINNER
RGP DESIGN STUDIO



Reminiscent of the traditional *Guthu mane*, the quintessential elements of this age-old structure have been modernised. It features a large-scale height, thatched sloping roof and an open-plan design along with red Mangalorean tiles, but the team has played with the dimensions of the structure and the scale of the roofs, to lend it a tropical, almost Balinese vibe, with the identifiable elements of the *Guthu mane*.

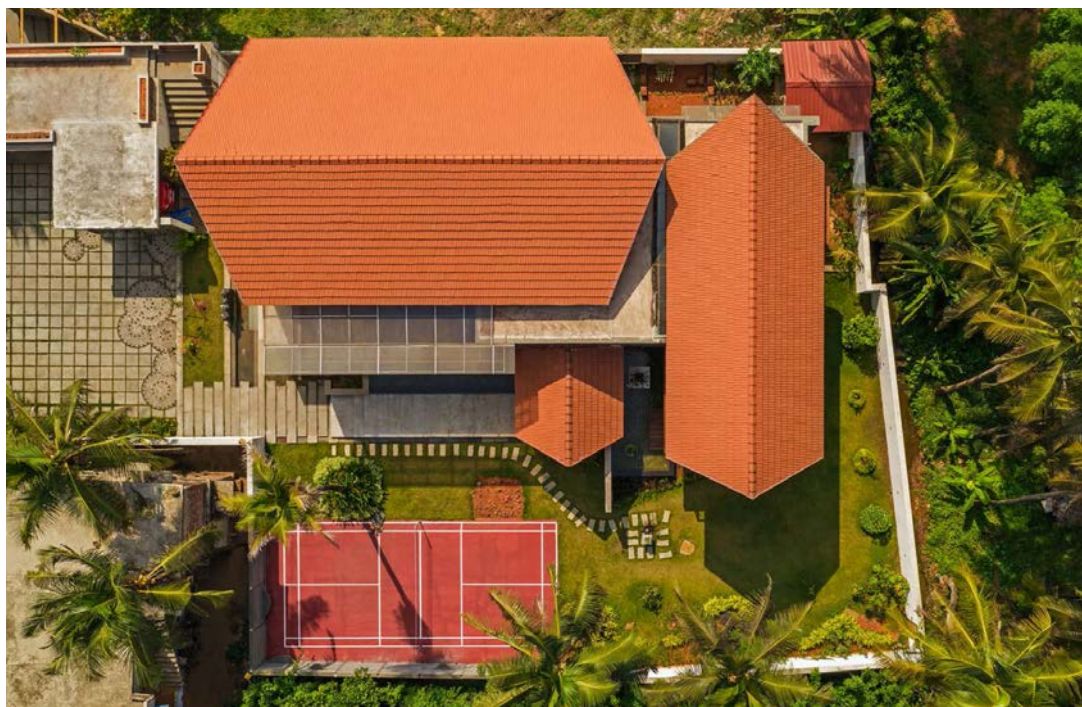


IMAGE SHAMANTH PATIL

PROJECT IMAGES COURTESY
RGP DESIGN STUDIO

“This is a modern tropical home set in a lush coconut plantation. The house is reminiscent of *Guthu mane*, a traditional Mangalorean house, but with a modern twist.”

— Team RGP Design Studio

TRENDS EXCELLENCE AWARDS *South Special*

WINNER SHEILYHAROON ARCHITECTS



IMAGE SHAMANTH PATIL

The house design evolved from the site itself without disturbing the existing habitat. The family, committed to preserve the environment, was particular that the trees in the plot shouldn't be cut while renovating the house. Unlike many modern houses, the front courtyard isn't paved with interlocking blocks, instead, buffalo grass has been grown to add a touch of greenery.



PROJECT IMAGES COURTESY
SHEILYHAROON ARCHITECTS

"We transformed an ordinary concrete building into an adobe reflecting a fusion of modern tropical design and Kerala's traditional vernacular architecture."

— Team Sheilyharoon Architects

TRENDS EXCELLENCE AWARDS
South Special

WINNER
SRIJIT SRINIVAS - ARCHITECTS

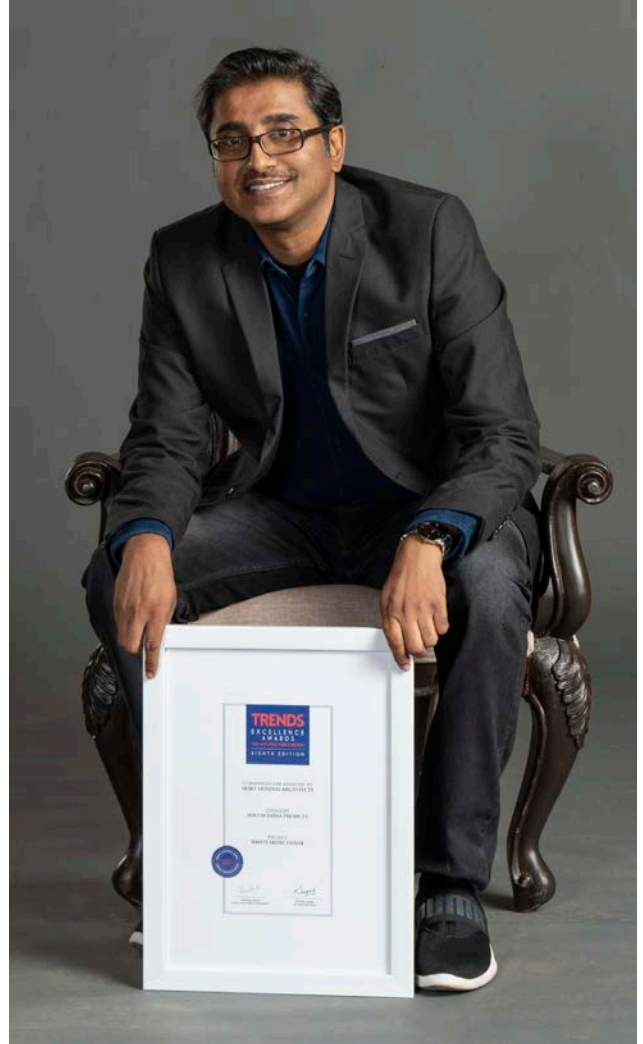
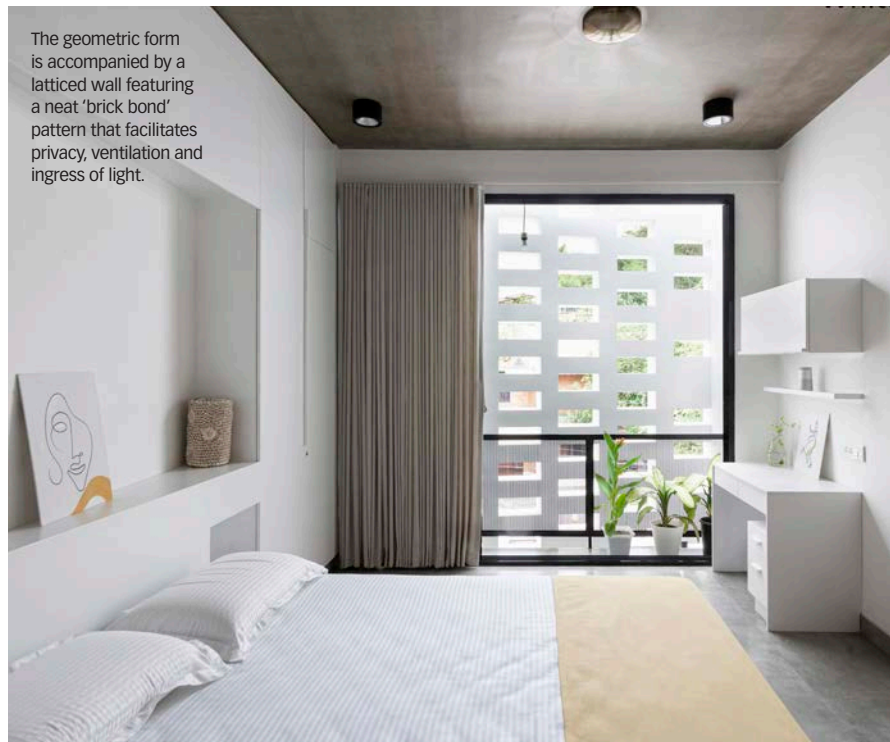


IMAGE SHAMANTH PATIL J



PROJECT IMAGES COURTESY
SRIJIT SRINIVAS ARCHITECTS

The geometric form is accompanied by a latticed wall featuring a neat 'brick bond' pattern that facilitates privacy, ventilation and ingress of light.



"The Skube can be seen on the front facade as a twisted cuboid emerging from a sea of pristine white."

— Team Srijit Srinivas Architects

TRENDS EXCELLENCE AWARDS
South Special

WINNER
STUDIO NIRVANA



IMAGES COURTESY
STUDIO NIRVANA



For the terrace area, we did simple roofing with dried wooden logs tucked into one side leaving the rest of the area open. The space is naturally gifted with a lot of large trees surrounding it. We designed a concrete seating with a planter box as backrest which in a similar way can seat a bigger gathering.

“Located in Thrissur, Kerala, it is an old house surrounded by thick gardens, huge old mango trees, a big natural pond on one side and paddy fields on the other side bringing in a lot of cool breeze and sunlight.”

— Team Studio Nirvana

TRENDS EXCELLENCE AWARDS

*Recognition For Contribution
To The Fields Of
Indian Architecture
And Design*

THOMAS ASSOCIATES ARCHITECTS AND MISTRY ARCHITECTS



IMAGE SHAMANTH PATIL J



IMAGE SHAMANTH PATIL J



IMAGE COURTESY
MISTRY ARCHITECTS

Architect TM Thomas (Above-Right) established Thomas Associates Architects in the early 1970's. By the time Tilak Thomas, his son, joined the firm Thomas Associates Architects had already established itself as one of the most admired architectural practices in Bengaluru, building the skyline of the city.

Sharukh Mistry, the founding partner of Mistry Architects, is an architectural legend that has firmly led the design firm through the contemporary construes of sensitive architectural creations. As a result, the firm has garnered a lineage of being known for its sensitive architectural contributions in India.

It is an honour to recognise the integral body of work by both firms.

HOME & DESIGN

TRENDS